

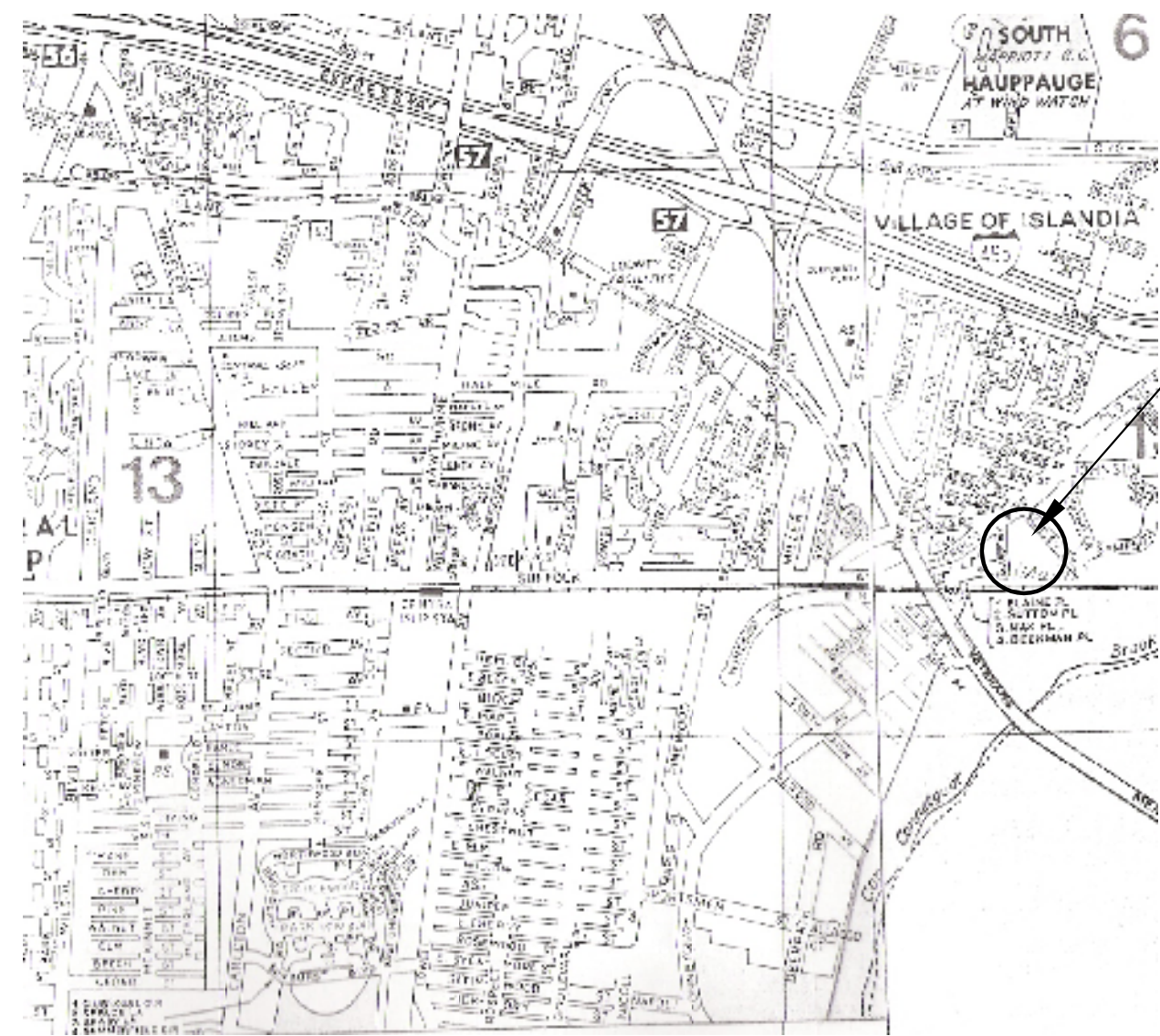
SITE PLAN

"THE PRESERVE AT ISLANDIA"

OLD NICHOLS ROAD
INCORPORATED VILLAGE OF ISLANDIA
TOWN OF ISLIP

OWNER / APPLICANT
ISLANDIA PARTNERS LLC

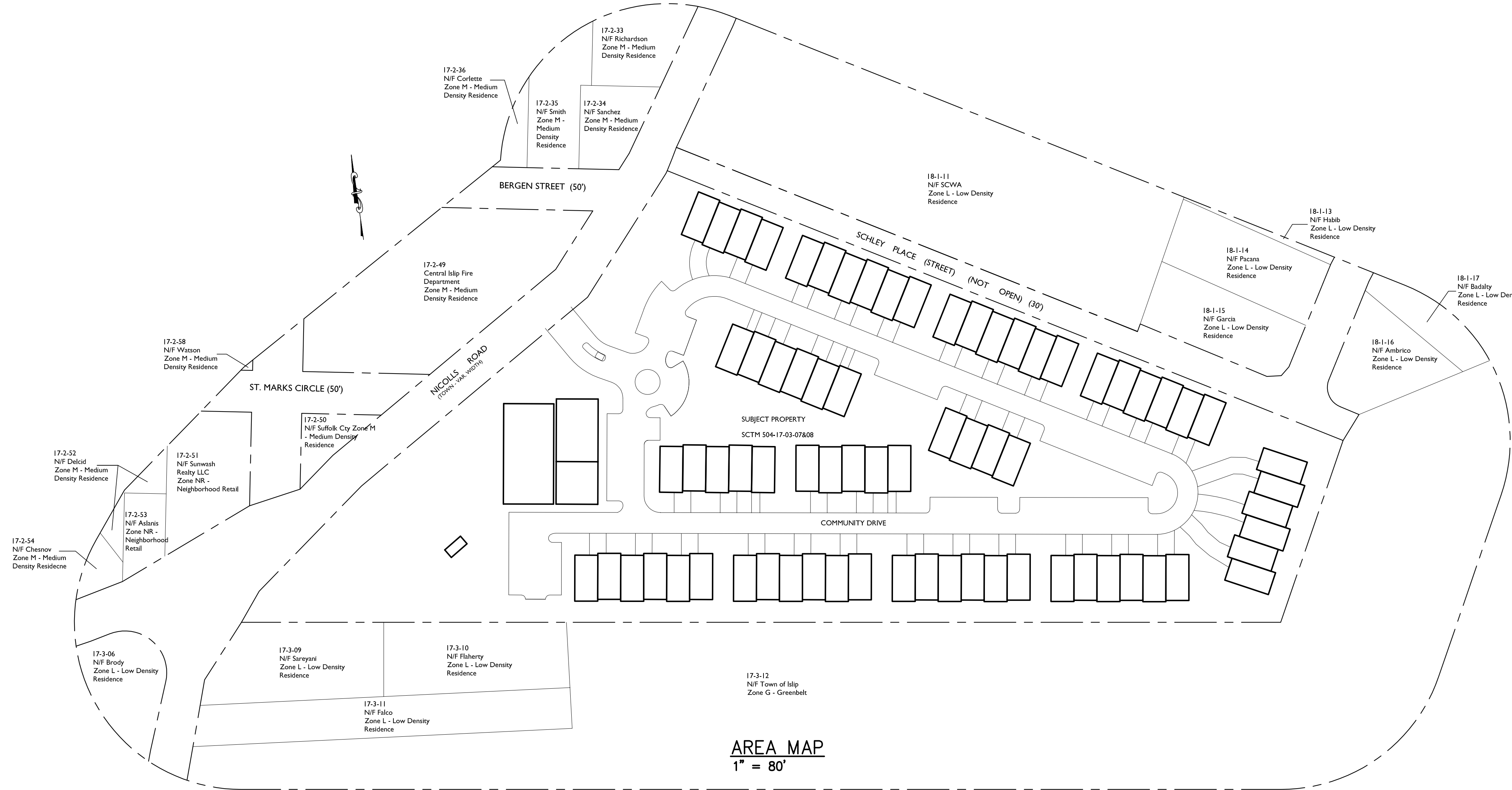
399 WEST JOHN STREET
HICKSVILLE, NEW YORK 11801



SITE LOCATION

KEY MAP
1" = 1,750' +/-

SHEET INDEX	
SHEET NO.	TITLE
COVER SHEET	
SP1.0	EXISTING CONDITIONS AND TOPOGRAPHY
SP2.0	GENERAL NOTES, LEGEND, ABBREVIATIONS & ZONING TABULATION
SP3.0	CLEARING & DEMOLITION PLAN
SP4.0	LAYOUT & DIMENSION PLAN
SP5.0	GRADING & DRAINAGE PLAN
SP6.0	UTILITY PLAN
SP7.0	EROSION & SEDIMENT CONTROL PLAN
SP8.1	LIGHTING PLAN
SP8.2	LANDSCAPING PLAN



PREPARED BY
R & W / Engineers, P.C.

132 EAST MAIN STREET
BAY SHORE, NEW YORK 11706
631-969-8535 FAX 631-969-8518
JUNE 2008

Subject Property
SCTM : 504-17-03-07&08